

HumaScope Line

**Binocular/Trinocular Laboratory Microscopes
for General Use in Laboratories and Doctors' Offices**

- > Expanded line
- > Enhanced features
- > Modern, ergonomic design
- > Latest LED technology

CoreLab DX

HumaScope Line



Human

Diagnostics Worldwide

HumaScope Fluo^{LED}

The Future is Now – Flexibility and Perfection



Latest LED illumination technology

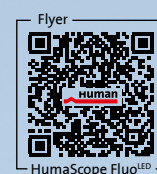
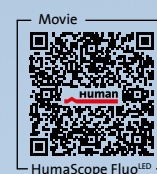
- › Constant bright light
- › No heat development
- › Low power consumption
- › Long LED life: 100,000 h
- › Maintenance free brightfield illumination.
- › Maintenance free fluorescence illumination.

Easy and fatigue-free operation

- › One finger focusing
- › Ergonomic stage drive
- › Reverse nosepiece for more working space and easy slide changes
- › Large-format mechanical stage

Excellent optics

- › Infinity corrected plan achromatic optics
- › Special fluorescence plan objective PL 40/0.85
- › Köhler Illumination



Technical data	HumaScope Fluo ^{LED}	REF
	2 channel LED fluorescence (blue, green), with rechargeable batteries	14800 14804
	3 channel LED fluorescence (blue, green, UV)	14801
	3 channel LED fluorescence (blue, green, violet)	14802
	4 channel LED fluorescence (blue, green, UV, violet)	14803
Light source	Transmitted light White LED, 3 W brightness adjustable	
	Fluorescence illumination Blue LED 3.6 V, 3 W	
	Green LED 3.6 V, 3 W	
	Ultraviolet LED 3.6 V, 3 W (optional)	
	Violett LED 3.6 V, 3 W (optional)	
Fluorescence filter	Blue: excitation 420 – 485 nm, > 515 nm	
	Green: excitation 460 – 485 nm, > 590 nm	
	Ultraviolet: excitation 330 – 400, > 425 nm	
	Violet: excitation 395 – 415 nm, > 455 nm	
Head	Trinocular	
	Compensation free	
	360° rotatable	
	30° inclination,	
	interpupillary distance 53 – 75 mm	
Eyepiece	WF 10 x / 22 mm	
	Diopter adjustment	
Objectives	Infinity plan achromatic	
	4x/0.10; 10x/0.25; 40x/0.85 FL; 100x/1.25 Oil	
	40x & 100x spring loaded	
	Parfocal, anti-fungal treated	
Nosepiece	5 hole inverted	
Stage	Dimension: 210 x 140 mm	
	x/y movement: 50 x 75 mm	
Focus system	Coaxial coarse /fine focus, gear transmission with tension adjustable knob and up limit stopper system	
	4 mm movement per full turn, 2µm increment	
Condensor	Abbe condensor 1.25N.A.	
	Rack and pinion adjustment	
	Adjustable height	
Weight	10.32 kg	
Size	26 x 47 x 53 cm (W x D x H)	
Power supply	110–230V, 50–60 Hz	



> Green LED fluorescence illumination
Filter: 460–550 nm / 590 nm



> Blue LED fluorescence illumination
Filter: 420–485 nm / 515 nm



> Abbe condensor with filter holder

HumaScope Light^{LED}

Light Microscope

- > Achromatic objectives with anti-fungal coating
- > 4 hole nosepiece

Latest LED illumination technology

- > Long LED life: 100,000 h
- > Rechargeable batteries 30 h without external power supply
- > For healthcare in remote areas
- > Maintenance-free – no replacement bulbs required



Technical data _____ HumaScope Light^{LED} _____ REF 14400

Light source _____ LED 3.6 V 0.3 W
Adjustable brightness _____

Head _____ Binocular _____
Compensation free _____
360° rotatable _____
30° inclination _____

Eyepiece _____ Widefield, 10x / 18 mm _____

Objectives _____ Achromatic _____
4x, 10x, 40x, 100x (oil immersion) _____
40, 100x spring loaded _____

Nosepiece _____ 4-hole forward _____

Stage _____ Dimension:: 115 x 125 mm _____
x / y movement: 20 x 50 mm _____

Focus system _____ Coaxial coarse/fine focus gear trans-
mission with tension adjustable knob _____
and limit stopper system _____

Condensor _____ Abbe condenser 1.25 N.A. _____
Rack and pinion adjustment _____
Adjustable height _____
Filter holder _____

Power supply _____ 110-230 V 50-60 HZ _____
Rechargeable batteries 3 x AA 1.2 V 1800
mAh _____

HumaScope Classic^{LED}

Classic Microscope

- > Semi-plan-achromatic objectives with anti-fungal coating
- > 5 hole reverse nosepiece
- > Köhler illumination

Latest LED illumination technology

- > Long LED life: 100,000 h
- > Rechargeable batteries 30 h without external power supply
- > No blue filter necessary
- > Maintenance-free – no replacement bulbs required
- > External universal power supply 110-220 V 50/60 Hz



Technical data _____ HumaScope Classic^{LED} _____ REF 14500

Light source _____ LED 3.6 V 0.3 W _____
Adjustable brightness _____
Köhler illumination _____

Head _____ Binocular _____
Compensation free _____
360° rotatable _____
30° inclination _____

Eyepiece _____ Widefield, 10x / 18 mm _____

Objectives _____ Semi-plan-achromatic _____
4x, 10x, 40x, 100x (oil immersion) _____
40, 100x spring loaded _____

Nosepiece _____ 5-hole reverse _____

Stage _____ Dimension: 125 x 135 mm _____
x/y movement: 35 x 75 mm _____

Focus system _____ Coaxial course/fine focus, gear transmission with tension adjustable knob and up-stop knob _____

Condensor _____ Abbe condenser 1.25 N.A. _____
Rack and pinion adjustment _____
Adjustable height _____
Filter holder _____

Power supply _____ 110-230 V 50-60 HZ _____
Rechargeable batteries 3 x AA 1.2 V 1800 mAh _____

HumaScope Advanced^{LED}

Advanced Microscope

- > Plan-achromatic objectives with anti-fungal coating
- > 5 hole reverse nosepiece
- > Köhler illumination

Latest LED illumination

- > Long LED life: 100,000 h
- > Rechargeable batteries 30 h without external power supply
- > No blue filter necessary
- > Maintenance-free – no replacement bulbs required



Technical data _____ HumaScope Advanced^{LED} _____ 14600
 with trinocular head _____ 14601

HumaScope Advanced
Multimedia _____ 14600/200
 Complete Set (Trinocular head, C-mount
 adapter, HumaScope Pad 500)

Light source _____ LED 3.6 V 0.3 W
 Adjustable brightness _____
 Köhler illumination _____

Head _____ Binocular _____
 Compensation free _____
 360° rotatable _____
 30° inclination _____

Eyepiece _____ Widefield, 10x / 18 mm _____

Objectives _____ Plan-achromatic _____
 4x, 10x, 40x, 100x (oil immersion) _____
 40, 100x spring loaded _____

Nosepiece _____ 5-hole reverse _____

Stage _____ Dimension: 125 x 135 mm _____
 x/y movement: 35 x 75 mm _____

Focus system _____ Coaxial coarse/fine focus, gear trans-
 mission with tension adjustable knob _____
 and up-stop knob _____

Condensor _____ Abbe condenser 1.25 N.A. _____
 Rack and pinion adjustment _____
 Adjustable height _____
 Filter holder _____

Power supply _____ 110-230 V 50-60 HZ _____
 Rechargeable batteries 3 x AA 1.2 V 1800
 mAh _____

HumaScope Premium^{LED}

Premium Microscope

- > Infinity-corrected plan-achromatic objectives with anti-fungal coating
- > Inward 5 hole nosepiece for more working space and slide handling
- > Compensation free Siedentopf head
- > One finger focus

Latest LED illumination technology

- > Long LED life: 100,000 h
- > No blue filter necessary
- > Maintenance-free
- > External universal power supply 110-220 V 50/60 Hz



Technical data _____	HumaScope Premium ^{LED} _____	REF 14700
	with trinocular head _____	14701

HumaScope Premium
Multimedia _____ 14700/200
Complete Set (Trinocular head, C-mount adapter, HumaScope Pad 500)

Light source _____	LED 3.6 V 3.0 W _____
	Adjustable brightness _____
	Köhler illumination _____
Head _____	Binocular _____
	Compensation free _____
	360° rotatable _____
	30° inclination _____
Eyepiece _____	Widefield, 10x / 20 mm _____
Objectives _____	Infinity plan achromatic _____
	4x, 10x, 40x, 100x (oil immersion) _____
	40, 100x spring loaded _____
Nosepiece _____	5-hole reverse _____
Stage _____	Dimension: 210 x 140 mm _____
	x/y movement: 50 x 75 mm _____
Focus system _____	Coaxial coarse/fine focus gear transmission with tension adjustable knob and up-stop knob _____
Condensor _____	Abbe condenser 1.25 N.A. _____
	Rack and pinion adjustment _____
	Adjustable height _____
	Filter holder _____
Power supply _____	110-230 V 50-60 HZ _____

HumaScope Line

HumaScope Pad & Cameras

	REF
HumaScope Pad 500	14000/200
Smart Media Device for HumaScope Line	
<ul style="list-style-type: none"> > 9.7" HD LED LCD touchscreen (1024 x 768) > 5 megapixel camera (2592 x 1936) > Multilanguage Android operation system > Built in mount – direct connection to trinocular head² or eyepiece adapter³ > 8 GB onboard flash memory to save images > WiFi, Bluetooth, USB, TF card slot for data transfer > HDMI interface for TV connection > Intuitive observing software with measurement functions 	



> HumaScope Pad 500

Digital Camera Sets

- > To observe, and record images
- > Direct connection to eyepiece
- > Require C-mount adapter 0,5x to connect to trinocular head
- > Including PC software

	REF
3 megapixel digital camera ^{1,2}	14000/66
<ul style="list-style-type: none"> > 1/2 inch sensor > Resolution 2048 x 1536 	

5 megapixel digital camera ^{1,2}	14000/86
<ul style="list-style-type: none"> > 1/2.5 inch sensor > Resolution 2048 x 1536 	

10 megapixel digital camera ^{1,2}	14000/87
<ul style="list-style-type: none"> > 1/2.3 inch sensor > Resolution 3856 x 2764 	



> Digital camera set

Accessories	REF
C-mount adapter 0.5x	14000/80
C-mount adapter 0.4x	14000/54
C-mount adapter 1.0x	14000/55
C-mount Adapter adjustable 0.4x	14000/541
C-mount Adapter adjustable 0.5x	14000/801
C-mount Adapter adjustable 1x	14000/551
Eyepiece adapter 0.5x	14000/205

¹ With eyepiece adapter, object micrometer and software

² C-mount adapter is necessary to connect to trinocular head

³ Eyepiece adapter necessary to connect without trinocular

HumaScope Line

Accessories

		Fluo ^{LED}	Premium	Advanced	Classic	Light			Fluo ^{LED}	Premium	Advanced	Classic	Light
	REF												
Monocular Head	14000/10			X									
Trinocular Head	14000/13			X	X								
Trinocular Infinity Head	14000/15		X										
Eyepiece 10 x 18 mm View Field	14000/16					X							
Eyepiece 10 x 18 mm View Field	14000/17			X	X								
Eyepiece 10 x 20 mm View Field	14000/18		X										
Eyepiece 16 x 11 mm View Field	14000/19		X	X	X	X							
Eyepiece 20 x 11 mm View Field	14000/20		X	X	X								
Eyepiece 20 x 12 mm View Field	14000/133	X											
Eyepiece 10 x 10 mm Micrometer with 100 Division 18 mm View Field	14000/21			X	X	X							
Eyepiece 10 x 10 mm Micrometer with 100 Division 20 mm View Field	14000/22		X										
Objective Achromatic 60 x	14000/26					X							
Objective Achromatic 60 x	14000/32				X								
Objective Achromatic 20 x	14000/30					X							
Objective Semi Plan 20 x	14000/36				X								
Objective Plan 20 x	14000/41			X	X								
Objective Plan Infinity 40 x	14000/140	X	X										
Objective Plan 60 x	14000/43			X	X								
Objective Plan Infinity 20 x	14000/47	X	X										
Objective Plan Infinity 100 x	14000/49	X	X										
Dark Field Condensor Dry	14000/52	X	X	X	X	X							
Dark Field Condensor Oil	14000/53	X	X	X	X	X							
Photography Attachment for Trinocular Head	14000/56	X	X	X	X								
Simple Polarisation Kit	14000/57			X	X	X							
Simple Polarisation Kit	14000/58	X	X										
Simple Achromatic Phase Contrast Kit	14000/59										X	X	X
Turret Achromatic Phase Contrast Kit	14000/60										X	X	
Turret Plan Phase Contrast Kit	14000/61										X	X	
Turret Plan Infinity Phase Contrast Kit	14000/62	X	X										
Digital Camera Adapter for Canon A Series	14000/67	X	X	X	X								
Stage Micrometer 1 mm / 100 division	14000/68	X	X	X	X	X							
Mirror Set	14000/71										X	X	X
Blue Filter	14000/72	X	X	X	X	X							
Frosted Filter	14000/73	X	X	X	X	X							
Green Filter	14000/74	X	X	X	X	X							
Yellow Filter	14000/81	X	X	X	X	X							
Rubber Eyeguard (Set of 2)	14000/82		X	X	X	X							
Transport Plastic Box	14000/83				X	X							
Transport Plastic Box Light	14000/84												X
Eyepiece Pointer 10x 18	14000/125												X
Eyepiece Pointer 10 x 18 Plan	14000/126				X	X							
Eyepiece Pointer 10 x 20 Inf.	14000/127		X										
Eyepiece Pointer 16 x 11	14000/128		X	X	X	X							
Eyepiece Pointer 10 x 22 Inf.	14000/130	X											
Eyepiece Pointer 10 x 22 Fluo	14000/131	X											
Eyepiece Pointer 15 x 15 Fluo	14000/132	X											
HumaScope Pad 500	14000/200	X	X	X									X ³
Eyepiece adapter 0.5 x	14000/205	X	X	X	X	X							

HumaScope Stereo

Zoom Stereo Microscope

State of the art

- > Binocular stereo microscope
- > With reflected and transmitted illumination
- > Latest LED illumination technology
- > Excellent optics



Excellent value for money and highest flexibility

- > Versatile and cost-efficient zoom stereo microscope
- > Broad range of functions for observation and documentation of specimen in medicine and life sciences.
- > Comfortable eyepieces ensure fatigue-free, comfortable observation.
- > Universal LED integrated in illumination stand

HumaScope Stereo

Zoom Stereo Microscope

Technical data	HumaScope Stereo	REF
	<i>Binocular stereo microscope</i>	14900
	<i>Trinocular stereo microscope</i>	14901
Eyepiece	WF 10x (view field 20 mm)	
	Diopter adjustment -5... +5 on both oculars	
	Rubber eyeguard	
	Inclination 45°	
Objective	Interpupillary distance 55–75 mm	
	Zoom magnification 0.7–4.5	
	Total magnification 7–45x	
	Visual field 28.5 ~ 4.5	
	Working distance 88 mm	
	Vertical movement 55 mm ≤ h < 140 mm	
Light source	transmitted light LED 7 V, 5 W adjustable	
	reflected light Annular LED illumination 3.5 V, 0.3 W adjustable	
Weight	5.36 kg	
Size	230 x 170 x 470 mm	
Power supply	85–240V, 50–60 Hz	



> HumaScope Stereo with HumaScope Pad 500

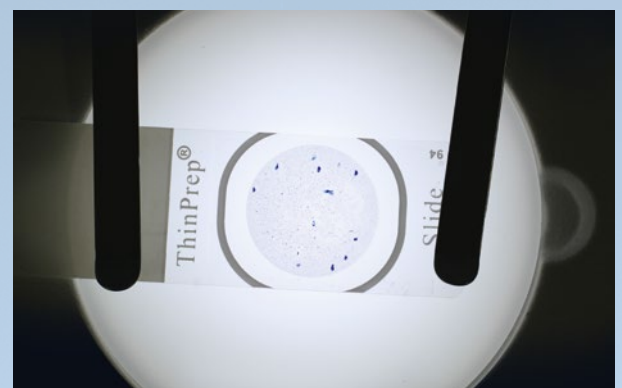


> Reflected light



> Transmitted light

Accessories		REF
Wide Field Eyepiece WF 10x (22 mm)		14900/1
Wide Field Eyepiece WF 15x (15 mm)		14900/2
Wide Field Eyepiece WF 20x (12 mm)		14900/3
Wide Field Eyepiece WF 25x (9 mm)		14900/4
Divisional Wide Field Eyepiece 10x (20 mm) 0.1 mm/Div		14900/5
Objective 0.5x W.D. 137 mm		14900/6
Objective 0.75x W.D. 103 mm		14900/7
Objective 1x W.D. 88 mm		14900/8
Objective 1.5x W.D. 48 mm		14900/9
Objective 2x W.D. 29 mm		14900/10
Trinocular Adaptor 1x for CCD Camera		14900/11
Trinocular Adaptor 0.5x for CCD Camera		14900/12
HumaScope Pad 500		14000/200



> Transmitted illumination



Human

Diagnostics Worldwide